

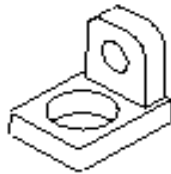
June 2, 2020
Rev. 0

8A & 8G Terminal Torque Values

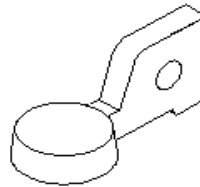
Terminal Type	Torque Value*		
	in / lb	ft / lb	Nm
T873	40	3	4.5
T876	40	3	4.5
T881	50	4	5.6
T904	180	15	20.0
T975	50	4	5.6
T978	180	15	20.0
1/4-20 THREADED INSERT	60	5	6.8
3/8-16 THREADED STUD	180	15	20.0
5/16-18 THREADED STUD	120	10	13.6
TSAE	50	4	5.6

* = Maximum recommended value

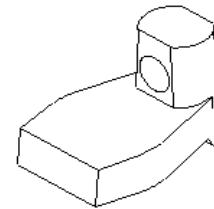
NOTE: Terminal types options not available on all 8A & 8G batteries



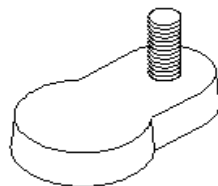
T873



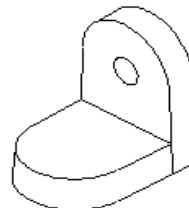
T876



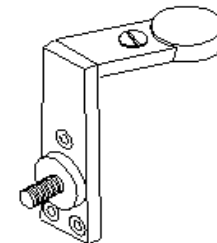
T881



T904



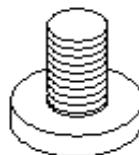
T975



T978



THREADED INSERT



TREADED STUD



TSAE

NOTE: Terminal types lists not available on all 8A & 8G Series batteries